

Berrylicious Batiks

by *moda*



This new batiks collection from Moda is bursting with delicious colors inspired by nature's sweetest treats. Juicy strawberry, watermelon, raspberry, grape, and plum tones in batik prints let you create beautiful jewel-box quilts and projects that are sure to shine.

AUGUST 2024 DELIVERY

IG | @modafabrics
#berryliciousbatiksfabric

moda FABRICS + SUPPLIES®

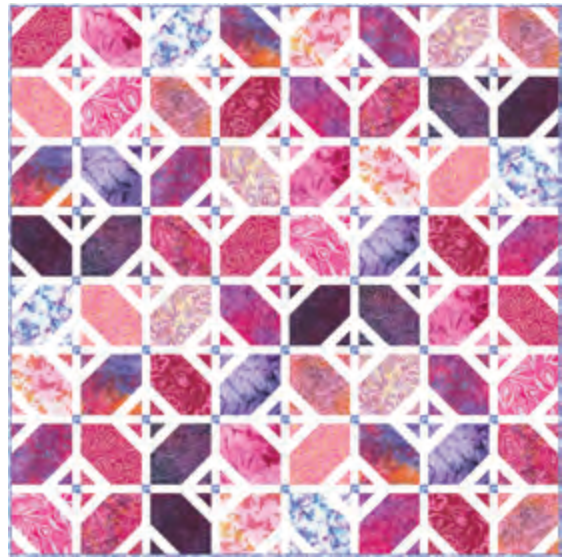




A



B



C

- A) BNB 2326 Confetti | 60" x 72" LC Friendly
by Branch and Blume
- B) HQ 135 How They Shine | 64" x 80"
AB Friendly | by Happy Quilting
- C) WS 12 Fanciful Floor - Light & Dark Versions
63" x 63" | by Wendy Sheppard

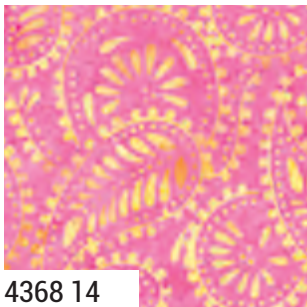
Berrylicious Batiks by *moda*



4368 13



4368 12



4368 14



4368 11



4368 16



4368 17



4368 18



4368 19

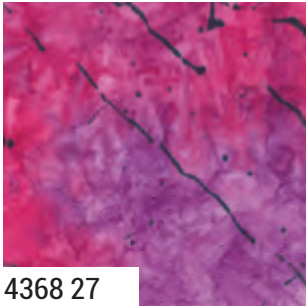


4368 20

moda

AUGUST DELIVERY

Berrylicious Batiks by *moda*



4368 27



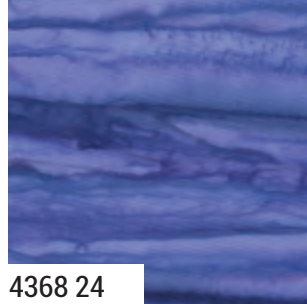
4368 26



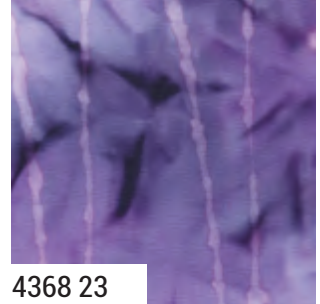
4368 15



4368 21



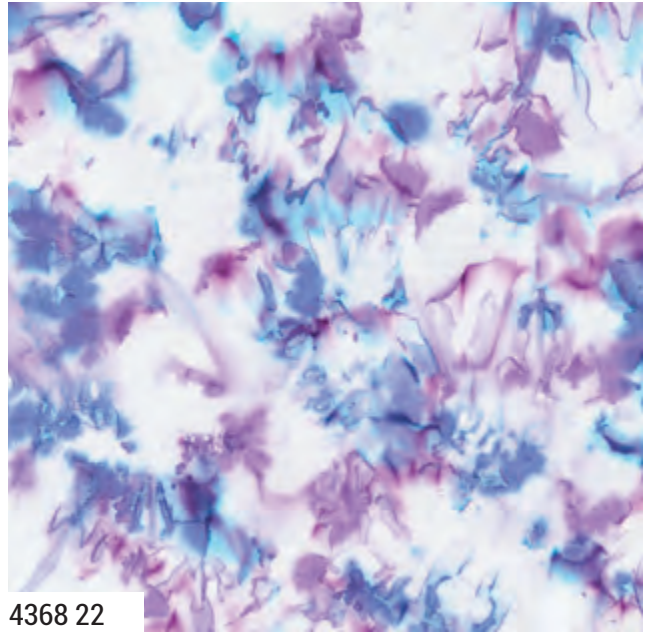
4368 24



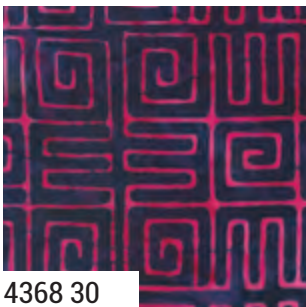
4368 23



4368 25



4368 22



4368 30



4368 29



4368 28

4368 **Asst. 10** **AB** **JR** **LC** **PP** **AUGUST DELIVERY**

•20 Prints •100% Premium Cotton
 JRs include two each of all 20 skus. LCs & PPs include two each of all 20 skus plus one of 4368-11 & 4368-21.