

DENIM & Daisies

FIG TREE & CO



I am a denim kind of gal all the way and wear jeans pretty much every day of my life. Mixing the denim “vibe” into a collection has long been on my design wishlist, and once I started mixing it up with my favorite orange and butterscotch colors, I knew I had discovered the perfect grouping of soft and strong. There is something about the utility of denim and strong blues with the warm, homey colors of tans, oranges, and butterscotch that makes it such a favorite combination for so many of us. I envision everyday decorating quilts and utility quilts to “use up” as well as beautiful heirloom two-color quilts. I cannot wait to see what you create with Denim & Daisies!



KIT
35380

FT 1469B Halloween Figs: Denim Version
66" x 72" | KIT35380

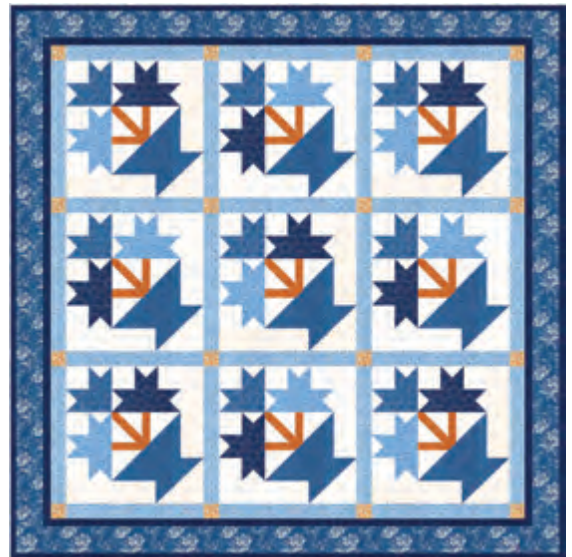
AUGUST 2024 DELIVERY

IG | @figtreeandco
#denimanddaisiesfabric

moda FABRICS + SUPPLIES®



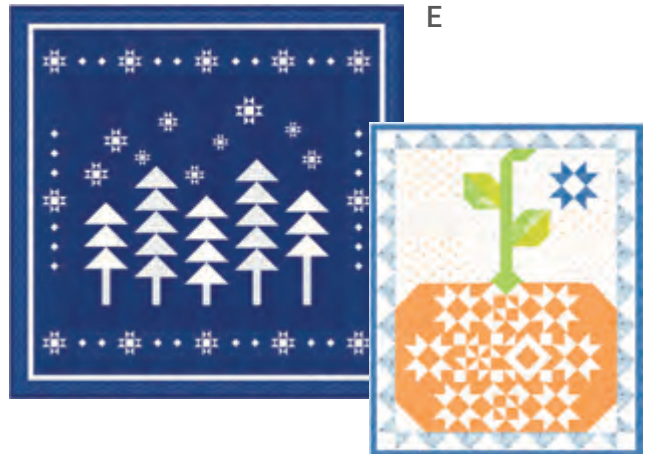
A



D

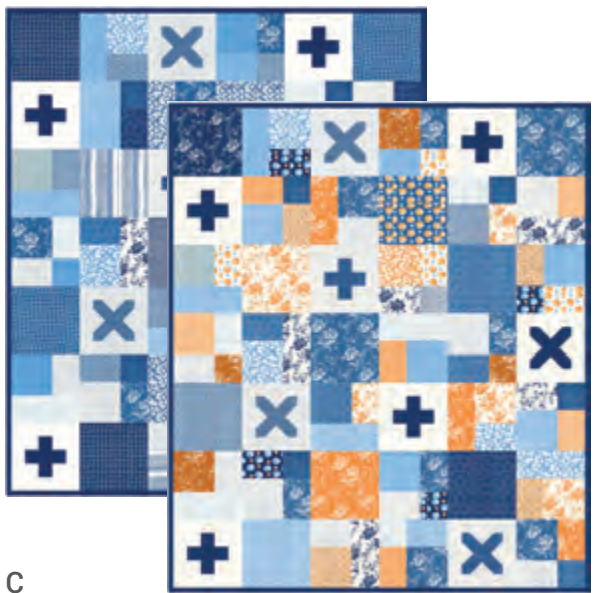


B



E

F



C



G

Patterns by Fig Tree & Co.

- A) FT 1225 Rosehips | 80" x 80" & 65" x 65"
LC or AB Friendly
- B) FT 1450 Trellis | 74" x 74" | *LC or AB Friendly*
- C) FT 1829 Vintage Scrapworks | 60" x 70"
- D) FT 1990 Denim Baskets | 71" x 71"
- E) FT 1991 Winter Walk in the Woods | 69" x 69"
- F) FT 1992 Pumpkin & Denim | 21" x 26"
- G) JF50DD7 Aurifil Thread Box

GREAT WAYS TO USE YOUR DENIM PRINTED "PATCHWORK"

One of the things that inspired my DENIM & DAISIES collection, was a vintage patchwork like the one you see pictured here. I knew it would make such a great pre-printed patchwork for you to play with! I am beyond excited to show you all the ways you can use it to make beautiful things! *-Joanna*

This patchwork makes an absolutely perfect quilt backing in both colors, it is also a wonderful patchwork to use for so many different projects as it is SO VERSATILE....
Shown are (4) different bag patterns that were all made with nothing but the patchwork! Just quilt the panel [all done on our machine at home] and assemble ANY bag pattern using the quilted fabric. **One yard creates all the bags shown & more.** Even more simple is the patchwork simply quilted up with a long arm panto as a simple throw that looks SO REAL -OR- with the addition of simple scallops on just the top and bottom of the quilt. The Fig Tree blog will have tutorials for both of these throws.



PATCHWORK FUN FACTS

- Comes in denim & cream
- It is 60" wide so even one yard gives you so much to work with!
- Used as backing makes a double sided quilt!
- Made super scrappy to mimic a real patchwork
- True faded denim color for the background print
- Denim throw uses 2 yds.
- Cream throw uses 1 ¼ yds.
- Scallop tutorial & hints/tips will be on the Fig Tree blog when fabric releases
- Bags shown use Kraftex paper in natural color & coordinating DENIM & DAISIES fabrics for accents

Bag Lady FT 1107



Denim Patchwork Tote FT 1994



Kimberly's Sack FT 1993

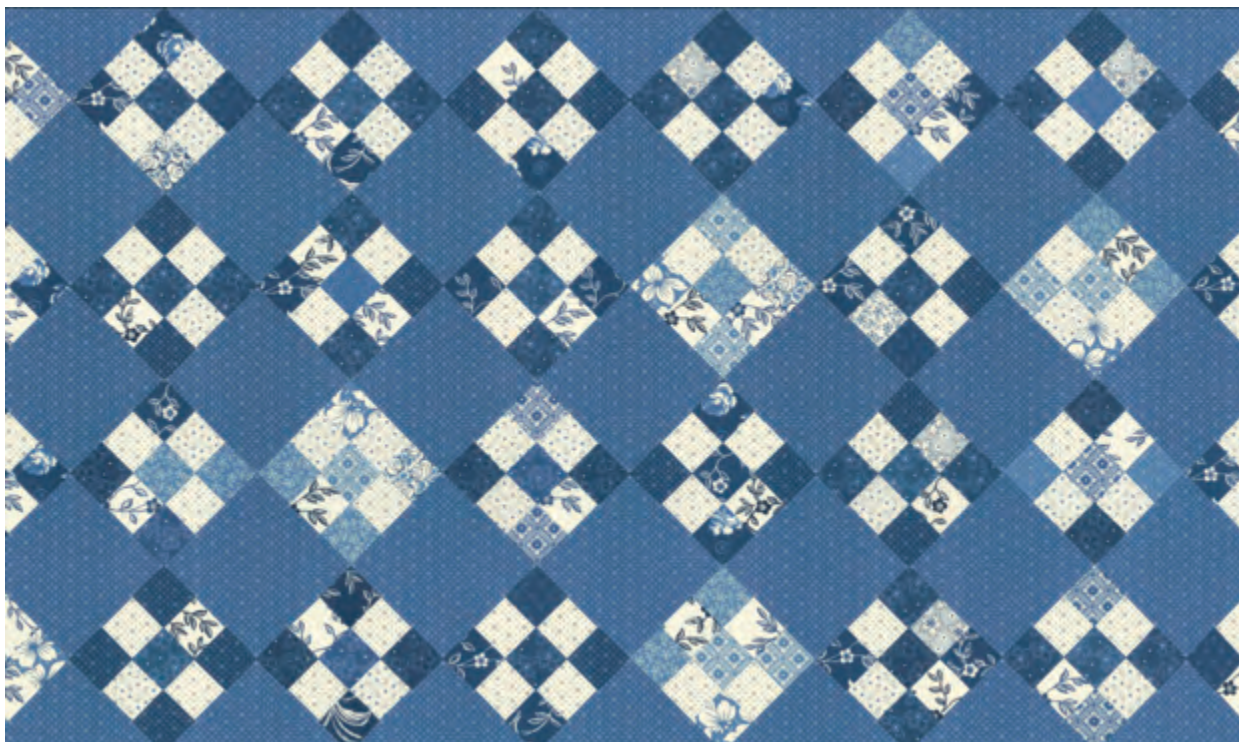


Little Jellies FT 856

DENIM PRINTED PATCHWORK PANELS



35388 11



35388 12

Panel Size: 24" x 60". Block Size: 4" x 4".

DENIM & Daisies FIG TREE & CO



35380 24*



35382 11*



35380 14



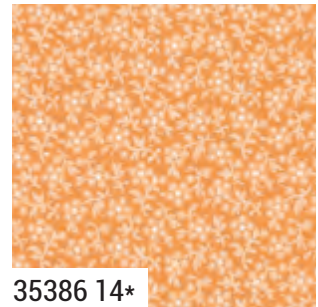
35381 14*



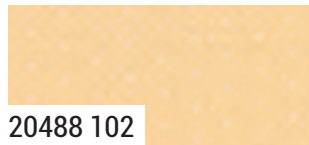
35385 14



35383 14



35386 14*



20488 102



35387 21



35386 12



35380 15*



35384 15



35385 15*

moda

AUGUST DELIVERY

DENIM & Daisies

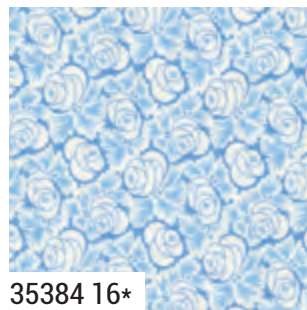
FIG TREE & CO



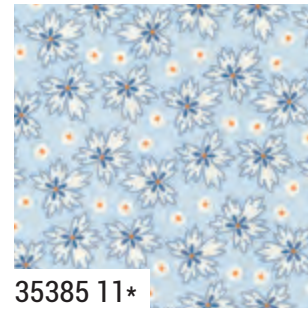
35386 16



35381 16*



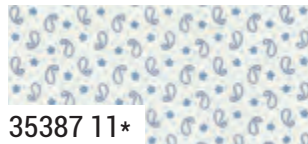
35384 16*



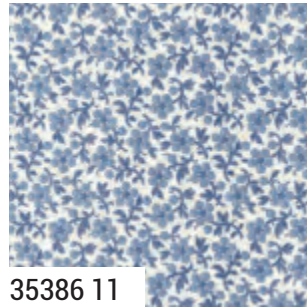
35385 11*



35383 16



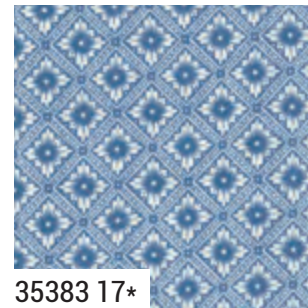
35387 11*



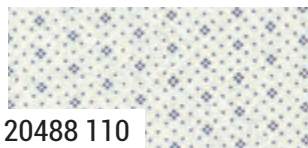
35386 11



35381 17



35383 17*



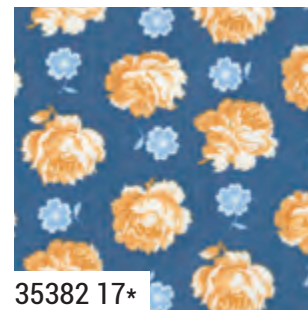
20488 110



35380 17*



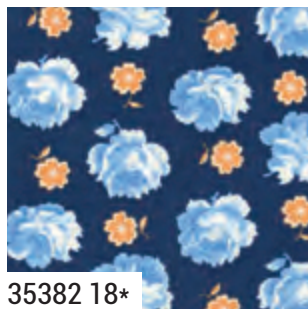
35387 17*



35382 17*



35385 17



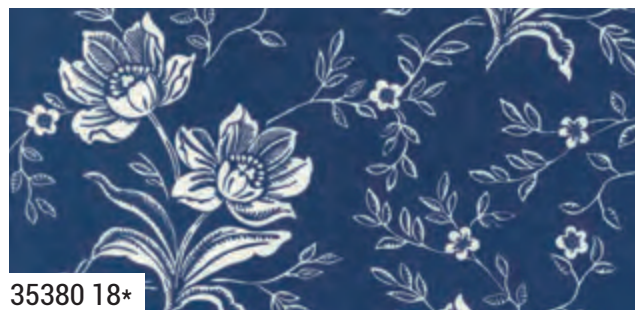
35382 18*



35384 18*



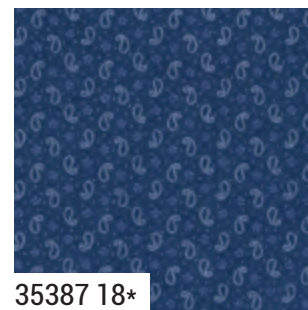
35380 28*



35380 18*



35385 18*



35387 18*



20488 108

35380

Asst. 15

Asst. 10

Low Cal 10

AB

F8

JR

LC

MC

PP

KIT

AUGUST DELIVERY

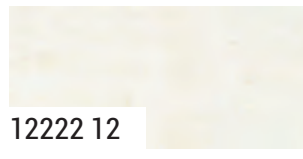
*34 Prints *2 60" Cheater Panels *100% Premium Cotton
Precuts do not include cheater panels. JR's, LC's, MC's & PP's include 34 skus plus two each of 35380-14, 17, 18, 28 & 35382-11 & 18.



DENIM & Daisies Wovens FIG TREE & CO



12222 11



12222 12



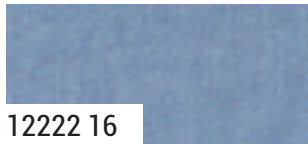
12222 14



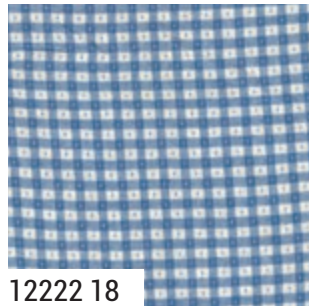
12222 13



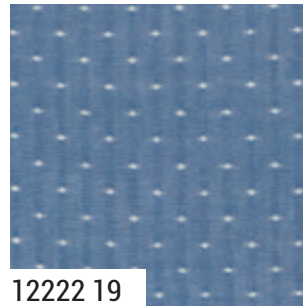
12222 15



12222 16



12222 18



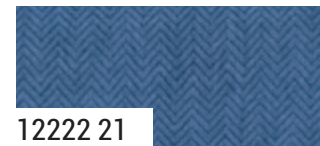
12222 19



12222 20



12222 17



12222 21



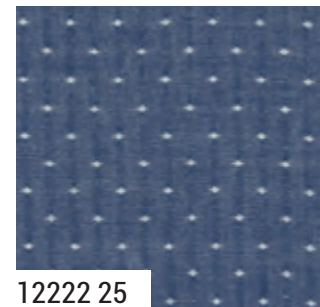
12222 22



12222 23



12222 24



12222 25



12222 26

45" Patchwork. Block Sizes vary from 3" x 3" to 3" x 5".

12222

Asst.
12

AB

LC

PP

AUGUST DELIVERY

•15 Wovens •1 45" Patchwork •100% Premium Cotton
Assortment & Precuts do not include patchwork. LCs & PPs include two each of
12222-14, 16 & 24. Three each of 12222-11, 12, 13, 15, 17, 18, 19, 20, 21, 22, 23 & 25.