

Dinah's Delight 1830-1850
Betsy Chutchian



Dinah's Dilemma

Betsy Chutchian Designs • 74" x 76 1/2"

BCD 1802 Retail



Yardage Requirements **1 Quilt** 10 Quilts



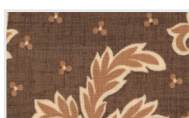
31670JR
7 52106 74681 7

stars
1 JRs 10 JRs



31678 14
7 52106 74714 2

star bkgd, chain
1 1/4 yds 12 1/2 yds



31672 17
7 52106 74696 1

chain
1/2 yd 5 yds



31675 11
7 52106 74705 0

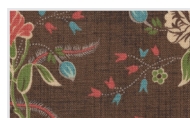
sashing, setting
1 5/8 yds 16 1/4 yds

Yardage Requirements **1 Quilt** 10 Quilts



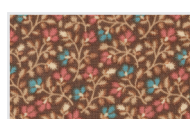
31671 18
7 52106 74691 6

cornerstones, setting
1 1/4 yds 12 1/2 yds



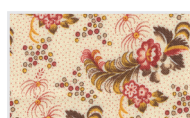
31670 21
7 52106 74687 9

border
2 yds 20 yds



31676 26
7 52106 74710 4

single fold binding
1/2 yd 5 yds



31673 11
7 52106 74697 8

backing
4 3/4 yds 47 1/2 yds



Dinah's Delight 1830-1850
Betsy Chutchian

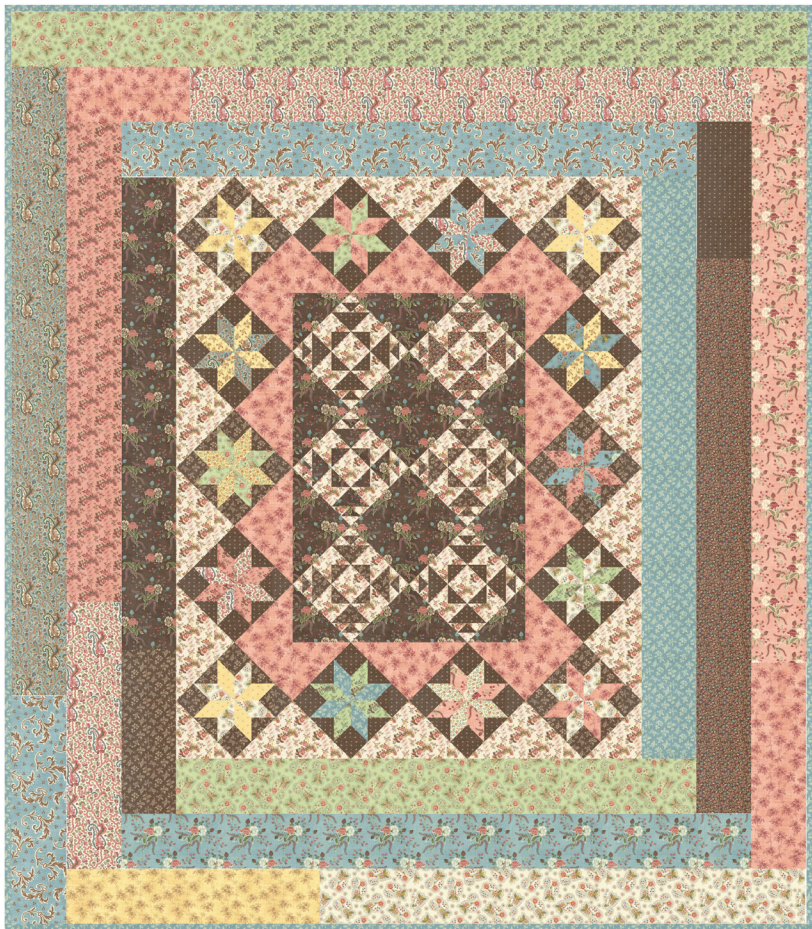


Gentleness

Betsy Chutchian Designs • 58" x 66 1/2"

BCD 1801

Retail



Yardage Requirements

1 Quilt

10 Quilts

	31670 18 	stars, borders 3/8 yd 3 3/4 yds
	31676 11 	stars 1/8 yd 1 1/4 yds
	31677 17 	star bkgd, center blocks 1/2 yd 5 yds
	31675 12 	stars 1/8 yd 1 1/4 yds
	31674 11 	stars 1/8 yd 1 1/4 yds
	31678 20 	star bkgd, center blocks, borders 5/8 yd 6 1/4 yds
	31675 15 	stars, setting triangles, borders 3/4 yd 7 1/2 yds

	31674 15 	stars, borders 3/8 yd 3 3/4 yds
	31672 13 	stars, borders 3/8 yd 3 3/4 yds
	31671 11 	stars, borders 3/8 yd 3 3/4 yds
	31678 15 	stars 1/8 yd 1 1/4 yds
	31671 13 	stars, borders 3/8 yd 3 3/4 yds
	31677 12 	stars 1/8 yd 1 1/4 yds
	31673 11 	setting triangles, center block bkgd 7/8 yd 8 3/4 yds
	31676 26 	stars, borders 3/8 yd 3 3/4 yds
	31674 13 	stars 1/8 yd 1 1/4 yds
	31676 14 	stars 1/8 yd 1 1/4 yds
	31670 21 	center blocks, setting, borders 3/4 yd 7 1/2 yds
	31670 16 	stars, borders 3/8 yd 3 3/4 yds
	31673 17 	stars, borders 3/8 yd 3 3/4 yds
	31673 15 	stars, borders 3/8 yd 3 3/4 yds
	31677 13 	stars, borders, single fold binding 3/4 yd 7 1/2 yds
	31670 16 	backing 3 3/4 yds 37 1/2 yds