



Honeybloom

3 Sisters

Honeybloom is inspired by light and airy spring afternoons. Walks through secret gardens in spinning dresses. Watching the clouds while laying next to your best friend in a field of tall wildflowers. Featuring the softest florals in shades of aqua, yellow and taupe, the collection of prints are delicate, sophisticated, and romantic with a crisp, fresh feel.

“Life is a flower of which love is honey”- Victor Hugo



DLL 208 Turn on the Charm Quilt
62" x 62" PP Friendly
by Designs by Lavender Lime
Pattern also includes 48" x 48" Topper

PS 44340 Honeybloom 62" x 72"
Low Cal Friendly



BNB 2309 Carolina Shag 59" x 75"
by Chirssy Lux of Branch and Blume
LC Friendly

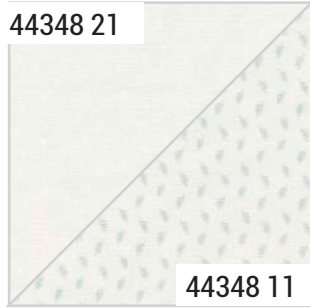
CHD 2317 Daisy Mae 64" x 80"
by Coach House Designs

ISE 279 Dewdrop 54" x 64"
by It's Sew Emma

Honeybloom 3 Sisters



44340 11*



44348 21

44348 11



44346 11*



44343 11*



44345 11*



44347 11



44344 11*



44342 11*



44340 12*



44342 12*



44341 12*



44347 12



44345 12



44343 12*

Honeybloom 3 Sisters



44342 13*



44345 13



44344 13*



44343 13*



44341 13



44341 11*



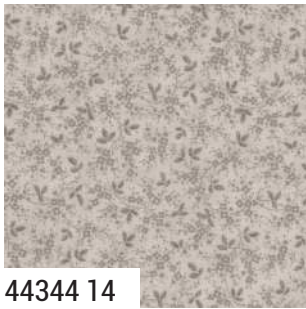
44346 21



44344 21*



44343 14*



44344 14



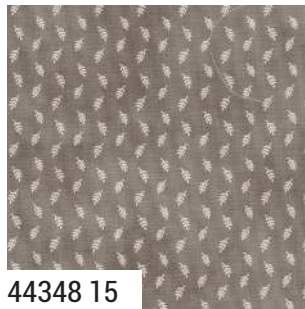
44347 14*



44346 14



44340 15*



44348 15



44345 15



44342 15*



44341 15*

44340

Asst.
15

Asst.
10

Low Cal
10

AB

F8

JR

LC

MC

PP

PS

JANUARY DELIVERY

•32 Prints •100% Premium Cotton

JRs, LCs, MCs & PPs include 32 skus plus two each of 44340, 44342 & 44344-11.