

Piecemakers Sampler

featuring **Piecemakers Sampler**

Block Of the Month and fabric by **Pam Buda**

12 Month Program



Finished Quilt Size Approximately 86" x 95"

Piecemakers Sampler BOM

Media Kit Includes:

Images:

- Quilt image(s) – Hi resolution (for printing) and Low resolution (for use online)
- Designer image(s)
- Designer logo
- Marcus Fabrics logo
- Social Media graphic (square)
- Additional images (varies with BOM program)

PDFs:

- General press release
- At-a-Glance BOM details
- Store Flyer - Use the blank space at the bottom to personalize with your shop's information - stamp, sticker, business card, etc.
- Mini Flyer (5.5" x 8.5") - perfect for your website, printed bag stuffer or order insert.
- Poster - Print on 11x17" paper (tabloid size) or 8.5"x11"(letter size)

Media Kit MK130-0000: (No Charge)

November 2023 - Media Kit Will Be Emailed

Shop Kit Includes:

- Fabric for quilt top and binding:
- Poster of quilt
- Shop Guide:
 - One complete pattern pack to make quilt top
 - Fabric requirements and kit cutting chart
 - Fabric reference chart
 - Full color image of the finished quilt

Name Of BOM Shop Kit SK130-0026: \$220.00 includes shipping
November 2023

Piecemakers Sampler BOM

Fabric and BOM Program by Pam Buda



Pam Buda's new BOM celebrates the lasting appeal of the Sampler style quilt, with her new collection of the same name, **PIECEMAKERS SAMPLER**. The rich color palette is as varied as the blocks they create...

Pam explains, "We may not all be quilters but we are all Piecemakers. There are thousands of blocks, and variations, and through our quilting life, we all have our favorites. Piecing blocks is like putting a puzzle together, and conquering blocks we deem challenging is a thrill. That's how we grow creatively. This quilt, with its gorgeous slate blue print background, has a myriad of sampler blocks to put together. They shine like jewels against the blue background. Perhaps a few blocks will soon become your new favorites? If you're a Piecemaker, this quilt is for you!"

Four tone-on-tone prints are available as coordinating 108" wide quilt backs.

This 12-Month program begins February 2024.



Quilt Size: Approx. 86" x 95"



PROGRAM HIGHLIGHTS

- **12-Month Program begins February 2024**
- 2 Fabric Shipments: January 2024, April 2024
- Shop Kit available November 2023
- Media kit available November 2023
- Patterns: 1 shipment - January 2024
OR 2 shipments - January 2024, July 2024

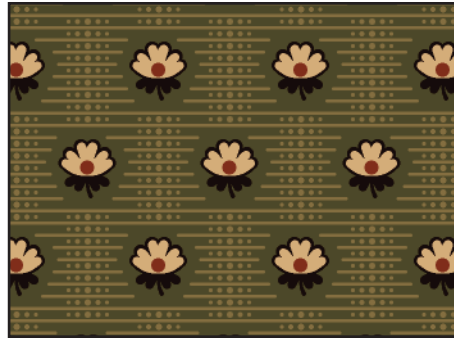
Piecemakers Sampler by Pam Buda

100% Cotton • 44/45" Wide • 10 Yd. Pcs. D/R Face Out

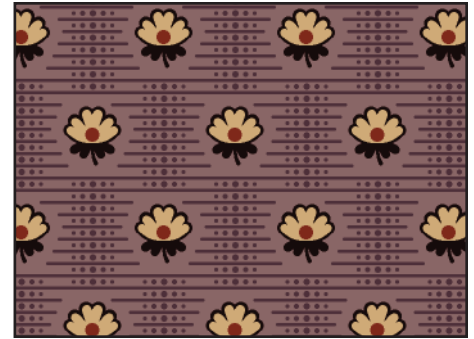
NOTE: Images on this page are for identification only. Refer to actual swatch card for accurate scale and color.



R170789 - BLUE Fancy Paisley



R170790 - GREEN Dot Flower



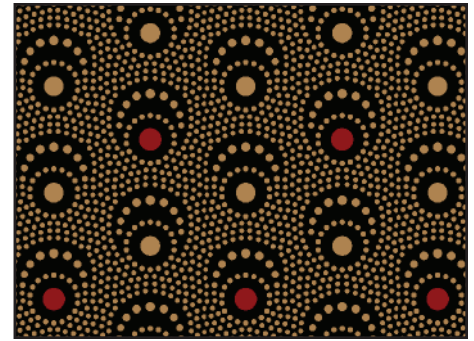
R170790 - LILAC Dot Flower



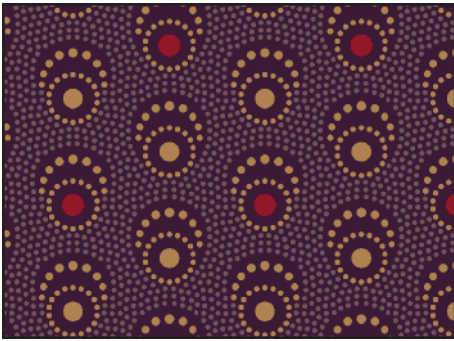
R170791 - BLACK Here & There



R170791 - RED Here & There



R170792 - BLACK Half Rounds



R170792 - Purple Half Rounds



R170793 - BLACK Essie's Stripe



R170793 - GREEN Essie's Stripe



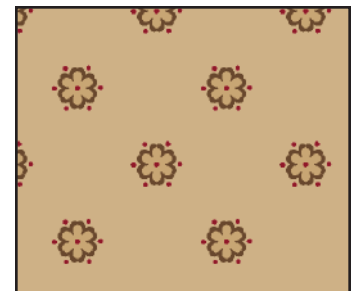
R170794 - CREAM
Summer Leaves



R170794 - GREEN
Summer Leaves



R170795 - RUST
Flower Pop

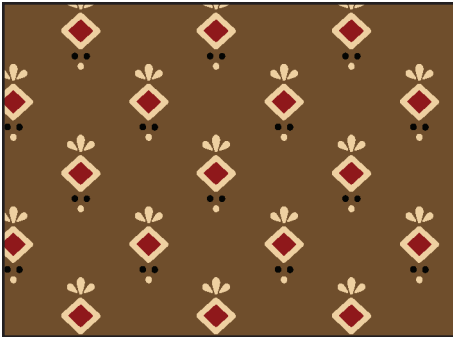


R170795 - TAN
Flower Pop

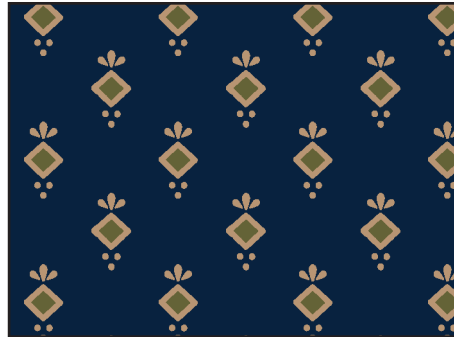
Piecemakers Sampler by Pam Buda

100% Cotton • 44/45" Wide • 10 Yd. Pcs. D/R Face Out

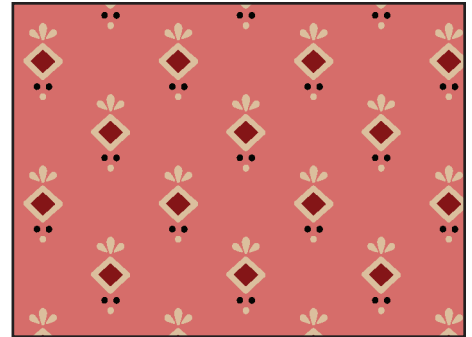
NOTE: Images on this page are for identification only. Refer to actual swatch card for accurate scale and color.



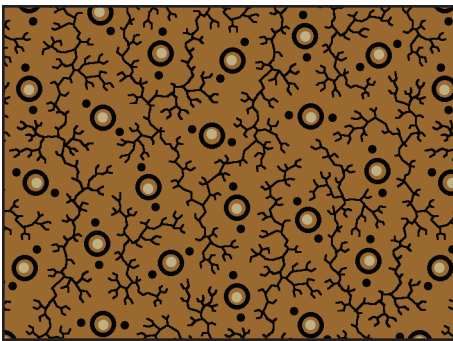
R170796 - COFFEE Ditsy Dot



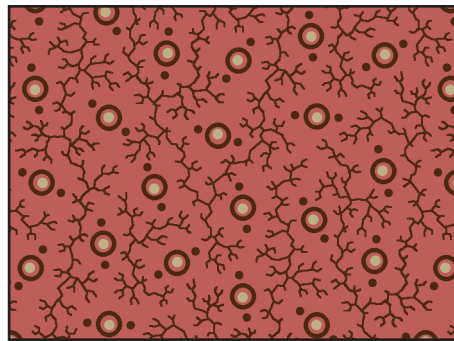
R170796 - Navy Ditsy Dot



R170796 - Pink Ditsy Dot



R170797 - GOLD Beads



R170797 - PINK Beads



R170798 - BROWN Country Vine



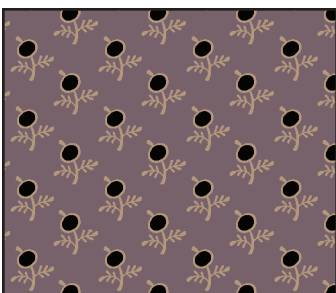
R170798 - RED Country Vine



R170798 - TAN Country Vine



R170799 - CREAM Sunflower



R170799 - Lilac Sunflower



R170799 - Navy Sunflower



R170800 - BEIGE Leaf Toss



R170800 - RUST Leaf Toss

Piecemakers Sampler BOM featuring Piecemakers Sampler

BOM & Fabric by Pam Buda of Heartspun Quilts

Bolt requirements based on 10 yd bolts except where noted.

	1 kit	10 kits	15 kits	20 kits	25 kits	35 kits	50 kits	75 kits	100 kits
Shipment #1 - 11 SKUs									
R170789-Blue	8-1/2 yds	9	13	17	22	30	43	64	85
R170790-Green	1/2 yd	1	1	1	2	2	3	4	5
R170793-Black	1/3 yd	1	1	1	1	2	2	3	4
R170794-Cream	5/8 yd	1	1	2	2	3	4	5	7
R170795-Tan	5/8 yd	1	1	2	2	3	4	5	7
R170796-Coffee	1/2 yd	1	1	1	2	2	3	4	5
R170797-Pink	1/4 yd	1	1	1	1	1	2	2	3
R170798-Red	1/2 yd	1	1	1	2	2	3	4	5
R170798-Tan	7/8 yd	1	2	2	3	4	5	7	9
R170799-Navy	1/3 yd	1	1	1	1	2	2	3	4
R170800-Rust	1/2 yd	1	1	1	2	2	3	4	5
Total Ship #1		19	24	30	40	53	74	105	139
Shipment #2 - 15 SKUs									
R170790-Lilac	1/2 yd	1	1	1	2	2	3	4	5
R170791-Black	1/4 yd	1	1	1	1	1	2	2	3
R170791-Red	5/8 yd	1	1	2	2	3	4	5	7
R170792-Black	1/2 yd	1	1	1	2	2	3	4	5
R170792-Purple	1/3 yd	1	1	1	1	2	2	3	4
R170793-Green	1/3 yd	1	1	1	1	2	2	3	4
R170794-Green	1/3 yd	1	1	1	1	2	2	3	4
R170795-Rust	1/3 yd	1	1	1	1	2	2	3	4
R170796-Navy	1/2 yd	1	1	1	2	2	3	4	5
R170796-Pink	1/2 yd	1	1	1	2	2	3	4	5
R170797-Gold	1/2 yd	1	1	1	2	2	3	4	5
R170798-Brown	1/2 yd	1	1	1	2	2	3	4	5
R170799-Cream	1/2 yd	1	1	1	2	2	3	4	5
R170799-Lilac	1/2 yd	1	1	1	2	2	3	4	5
R170800-Beige	1/2 yd	1	1	1	2	2	3	4	5
Total Ship #1		15	15	16	25	30	41	55	71
Total Bolts		34	39	46	65	83	115	160	210
Total Yards in Quilt Top: 20-1/4 yds									
Suggested Backing									
Backing: 108/110" Wide - 18 yd bolt									
R360788D-Blue	2-2/3 yds	3	4	6	7	10	14	20	27

Piecemakers Sampler by Pam Buda

SHIPMENT 1 - 11 SKUS



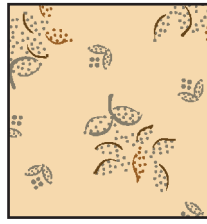
R170789-
BLUE



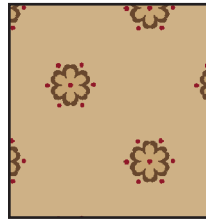
R170790-
GREEN



R170793-
BLACK



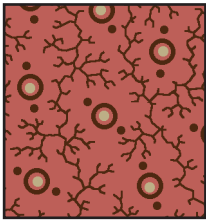
R170794-
CREAM



R170795-
TAN



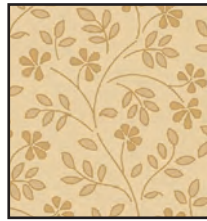
R170796-
COFFEE



R170797-
PINK



R170798-
RED



R170798-
TAN

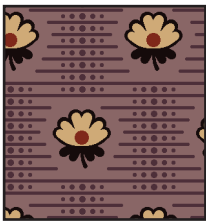


R170799-
NAVY



R170800-
RUST

SHIPMENT 2 - 15 SKUS



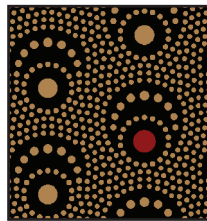
R170790-
LILAC



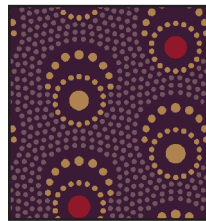
R170791-
BLACK



R170791-
RED



R170792-
BLACK



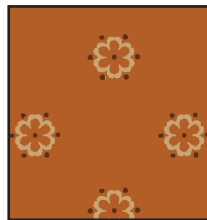
R170792-
PURPLE



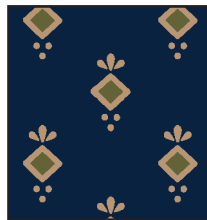
R170793-
GREEN



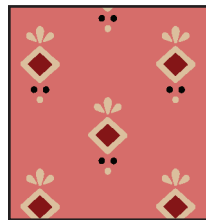
R170794-
GREEN



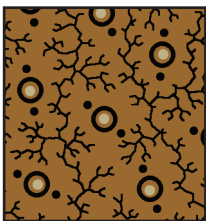
R170795-
RUST



R170796-
NAVY



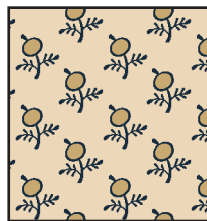
R170796-
PINK



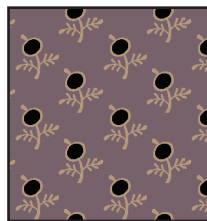
R170797-
GOLD



R170798-
BROWN



R170799-
CREAM



R170799-
LILAC



R170800-
BEIGE

NOTE: Images on this page are for identification only. Refer to actual swatch card for accurate scale and color.



483 BROADWAY
NEW YORK, NY, 10013
TEL: 212-354-8700
FAX: 212-354-5245

www.marcusfabrics.com

Piecemakers Sampler BOM

ORDER NO.	ORDER DATE

SOLD TO

E-MAIL _____

SHIP TO

TELEPHONE () _____ BUYER _____ SALESPERSON _____

CUST. PO NO.	TERMS	SHIP DATE	CANCEL DATE	SHIP VIA

SPECIAL INSTRUCTIONS **BOM SHIP COMPLETE**

Piecemakers Sampler

Shipment dates based on Program starting February 2024

**1ST SHIPMENT
11 SKUS
JANUARY
2024**

R170789-BLUE	10 YDS x _____	R170795-TAN	10 YDS x _____	R170798-TAN	10 YDS x _____
R170790-GREEN	10 YDS x _____	R170796-COFFEE	10 YDS x _____	R170799-NAVY	10 YDS x _____
R170793-BLACK	10 YDS x _____	R170797-PINK	10 YDS x _____	R170800-RUST	10 YDS x _____
R170794-CREAM	10 YDS x _____	R170798-RED	10 YDS x _____		

**2ND SHIPMENT
15 SKUS
APRIL 2024**

R170790-LILAC	10 YDS x _____	R170793-GREEN	10 YDS x _____	R170797-GOLD	10 YDS x _____
R170791-BLACK	10 YDS x _____	R170794-GREEN	10 YDS x _____	R170798-BROWN	10 YDS x _____
R170791-RED	10 YDS x _____	R170795-RUST	10 YDS x _____	R170799-CREAM	10 YDS x _____
R170792-BLACK	10 YDS x _____	R170796-NAVY	10 YDS x _____	R170799-LILAC	10 YDS x _____
R170792-PURPLE	10 YDS x _____	R170796-PINK	10 YDS x _____	R170800-BEIGE	10 YDS x _____

**108" QUILT BACKS
JANUARY 2024**

R360788D-BEIGE	18 YDS x _____	R360788D-CREAM	18 YDS x _____
R360788D-BLUE	18 YDS x _____	R360788D-GREY	18 YDS x _____

PIECEMAKERS SAMPLER MEDIA KIT: MK130-0000 NO CHARGE

Media Kit Will Be E-mailed November 2023

Please Provide E-Mail Address You Would Like Media Kit Sent To

PIECEMAKERS SAMPLER SHOP KIT: SK130-0026 \$220.00 _____
SHIPPING INCLUDED

Wholesale Pattern Order Form



HEARTSPUN QUILTS
 10150 BECKET COURT
 MOKENA, IL 60448
 FOR INFORMATION OR ORDERS PLEASE PHONE
 708-478-8150
 EMAIL: PAM@HEARTSPUNQUILTS.COM
 FAX 708-478-5027

Date: _____

Ship Date: _____

Piecemakers Sampler

Bill To

Ship To

Phone: _____

Email: _____

Contact: _____

Item	Description	Qty	Price/Each	Amount
HQ365	Complete Pattern Pack (Credit card will be auto charged at time of shipment)		\$36.00	
HQ365A	Two Pattern Shipments (January 2024; July 2024--15th of the month) (Credit card will be auto charged at time of shipment) \$12.50 Charged per shipment for a total of \$25.00		\$18.00 Charged Each Shipment	
HQ365SG	Shop Guide - printed (November 2023) (Credit card will be auto charged at time of shipment)		\$11.00	
HQ365SG pdf	Shop Guide - pdf (November 2023) (Credit card will be auto charged at time of shipment)		\$5.50	

Pattern Orders must be pre-paid.

Your card will not be charged until we ship.

Credit Card #: _____

Subtotal _____

Exp: _____ Security Code: _____

Shipping _____

Total _____

Signature: _____

108" Premium Quilt Backs: Piecemakers Sampler

by Pam Buda

100% COTTON • 108/110" WIDE • 18 YD PCS D/R FACE OUT



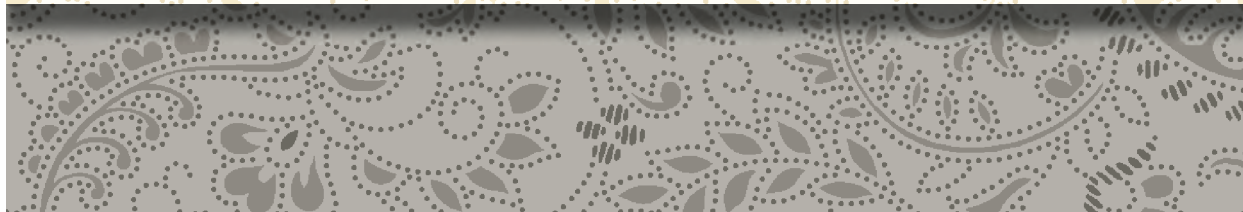
**R360788D -
BLUE**



**R360788D -
BEIGE**



**R360788D -
CREAM**



**R360788D -
GREY**

PIECEMAKERS SAMPLER
FEATURING PIECEMAKERS SAMPLER
HIGHLIGHTS

START TIME: *February 2024*

1st SHIPMENT: *January 2024*

2nd SHIPMENT: *April 2024*

MEDIA KIT: *November 2023*

SHOP KIT: *November 2023*

PATTERNS: *1 shipment*
 months 1-12: January 2024--ships 15th of the month
2 shipments
 months 1-6: January 2024--ships 15th of the month
 months 7-12: July 2024--ships 15th of the month

QUILT SIZE: *86" x 95"*

FABRIC

REQUIREMENTS: *Approximately 20-1/4 yds*

BACKING: *2-2/3 yards of 108" wide fabric*