

RAINBOW SPICE

by Sarah Thomas of SARIDITTY



*Every leaf speaks bliss to me,
fluttering from the autumn tree.*



-Emily Brontë

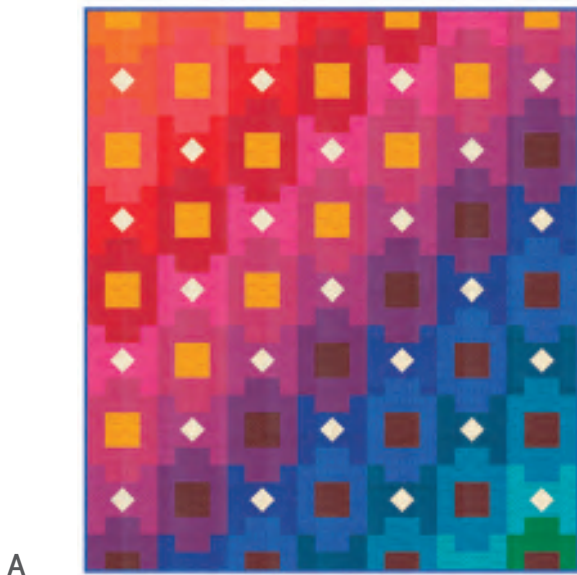
It's time to spice things up a bit with this full-spectrum collection of low-volume prints from Sarah Thomas of SARIDITTY. Rainbow Spice once again combines Sarah's own sketches, doodles, and quilting patterns with a vibrant palette of saturated and intense hues. This collection is a celebration of autumn favorites: cranberry muffins, mulled wine, fresh cider, pumpkin patches, apple picking, changing leaves, and quilting, of course!



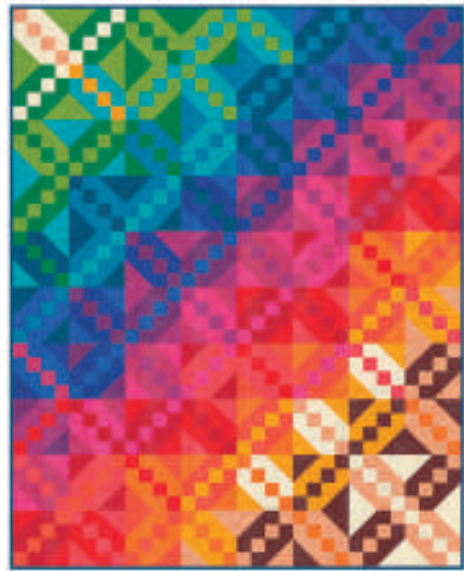
May 2024 Delivery

IG | @sariditty #rainbowspicefabric

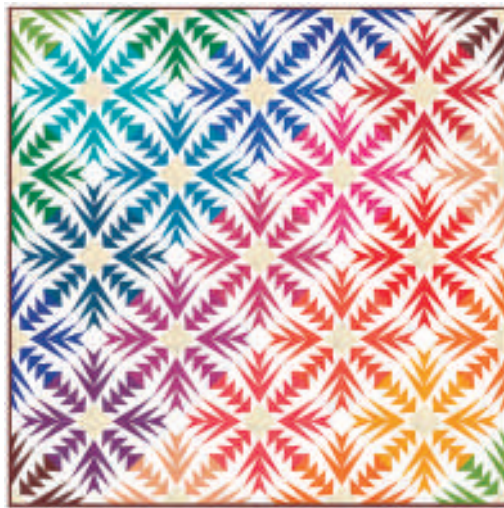
moda FABRICS + SUPPLIES®



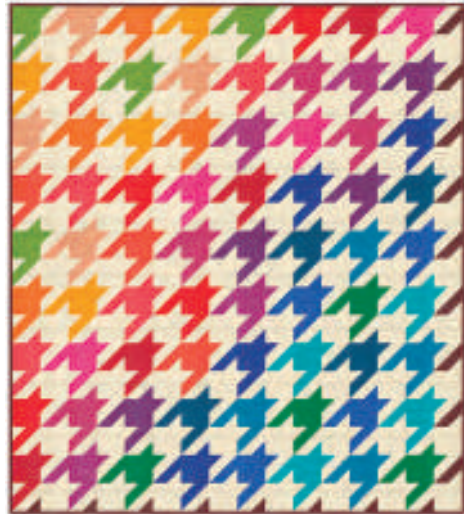
A



D



B



E



C

KIT
45042

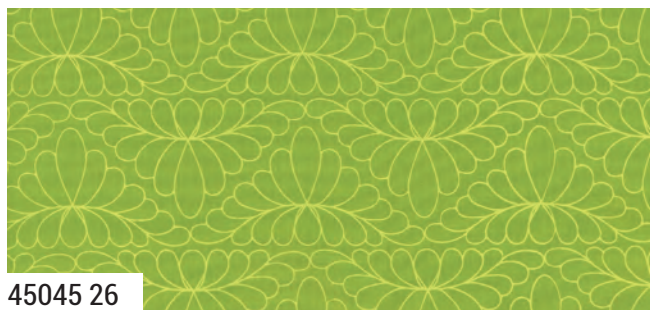


F

Patterns by Sariditty

- A) SD 003 Heirloom | 70" x 80" *DR Friendly*
- B) SD 017 Agave | 87" x 87"
- C) SD 020 Posy Patch | 72" x 72" *KIT45042*

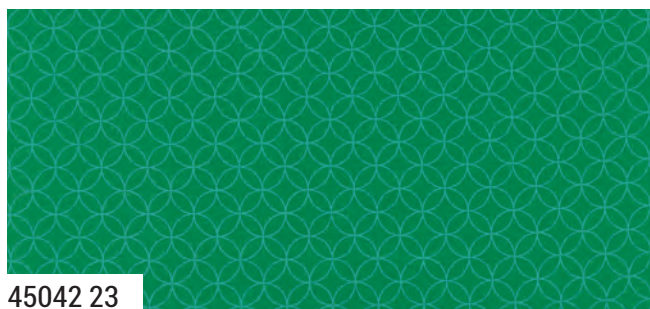
- D) SD 021 Fruitcake | 64" x 80"
- E) SD 022 Baskervilles | 72" x 81" *DR Friendly*
- F) SD 023 Fall Foliage | 64" x 64"
JR & DR or JR & LC Friendly



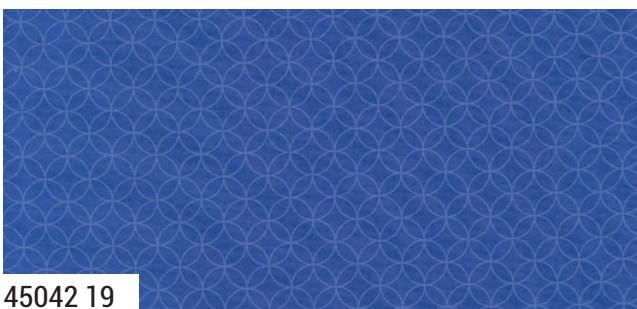
45045 26



45046 19



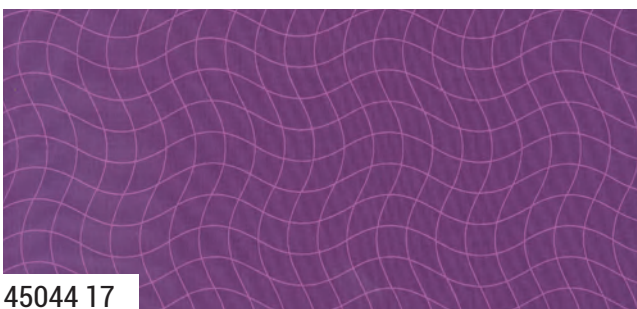
45042 23



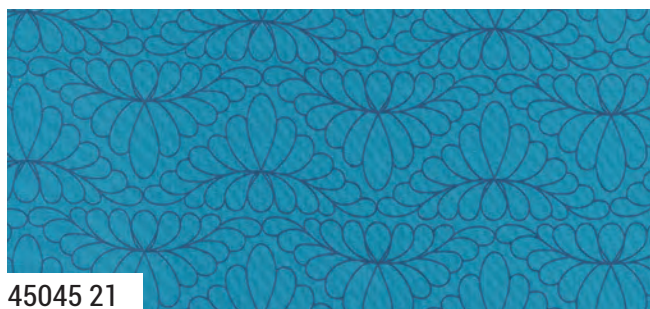
45042 19



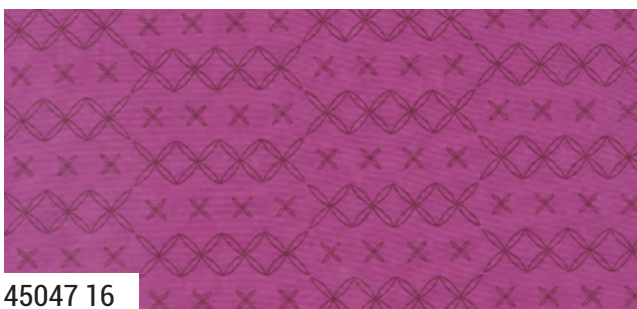
45047 22



45044 17



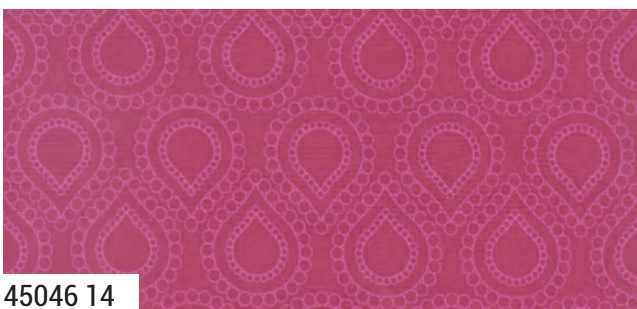
45045 21



45047 16



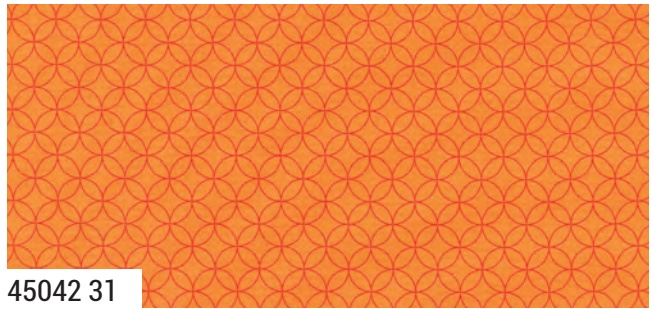
45043 21



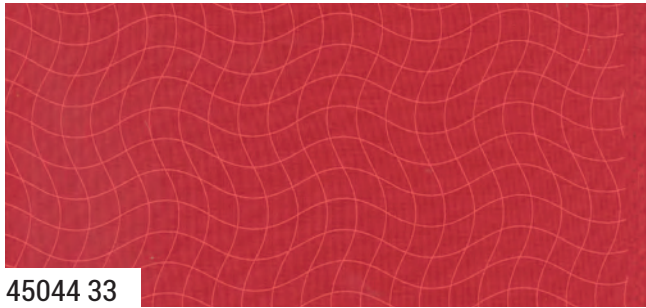
45046 14



45045 14



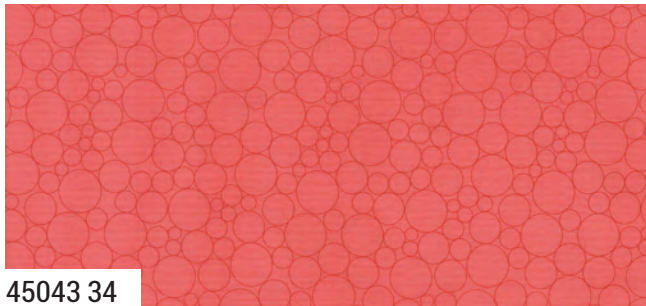
45042 31



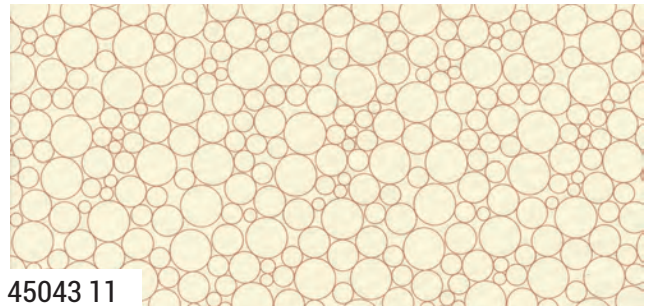
45044 33



45045 30



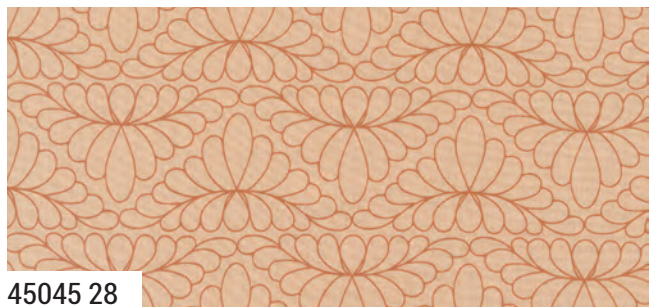
45043 34



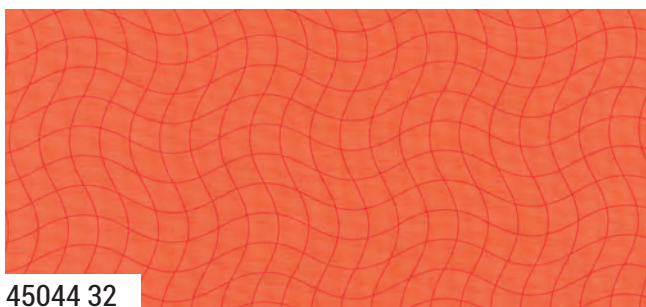
45043 11



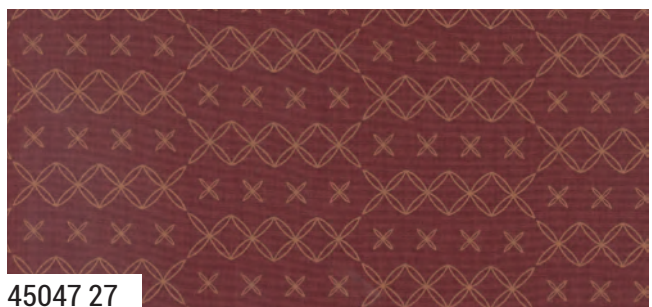
45046 33



45045 28



45044 32



45047 27

45042 Asst. 15 Asst. 10 AB DR JR LC MC PP KIT MAY DELIVERY

•20 Prints •100% Premium Cotton
 JRs, LCs, MCs & PPs include 2 each of all 20 skus.